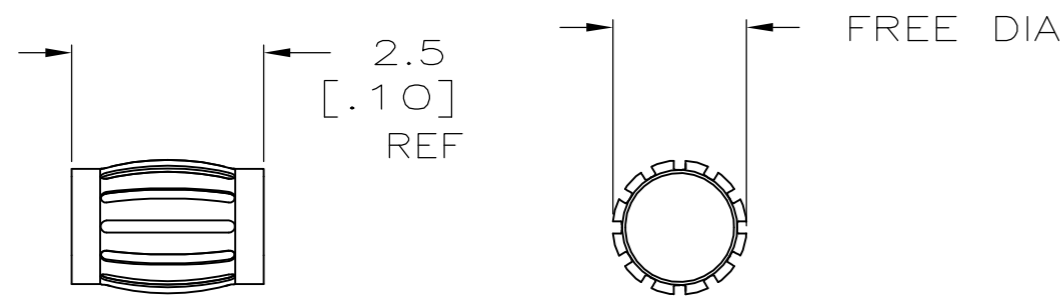
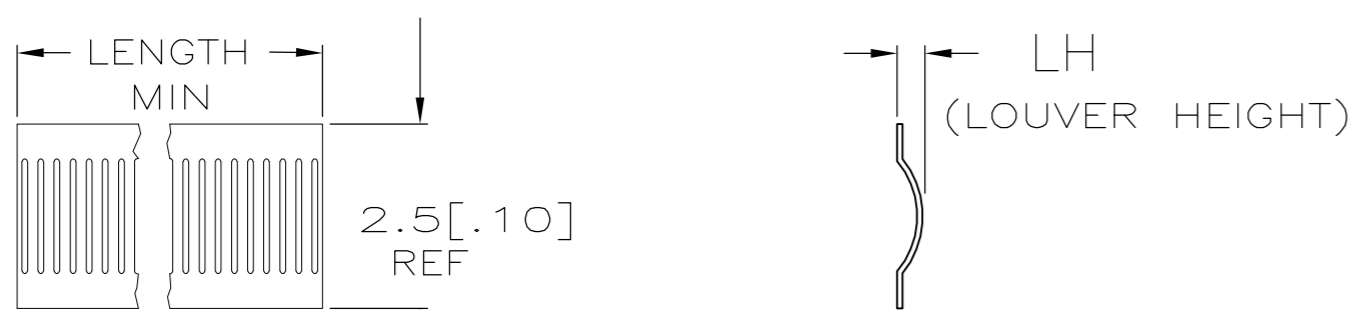


THIS DRAWING IS UNPUBLISHED. RELEASED FOR PUBLICATION
 © COPYRIGHT - By - ALL RIGHTS RESERVED.

LOC	DIST	REVISIONS			
P	LTR	DESCRIPTION	DATE	DWN	APVD
CH	11	H	REVISED PER ECO-15-011611	05NOV2015	NK MZ



STYLE B
(MALE)



STYLE C
(STRIP)

STYLE	FREE DIA	LENGTH	LH	MAT'L (NOTE)	MATING DIA REF	PLATING (NOTE)	NUM LOUV	MAT'L THK	REF	PART NO.
9	B [.375]	-- [.014]	8	9.5 [.375]	4-2	40	0.10 [.004]	--	2-192048-6	
10	B [.06]	-- [.012]	8	1.7 [.067]	1-2	5	0.10 [.004]	--	2-192048-5	
10	B [.20]	-- [.014]	--	--	3-2	20	0.10 [.004]	--	2-192048-4	
10	B [.06]	-- [.012]	8	--	UNPL	5	0.10 [.004]	--	2-192048-1	
10	C --	NOTE 6 [.014]	8	--	UNPL	--	0.10 [.004]	--	2-192048-0	
OBSOLETE	NOT AVAILABLE									
OBSOLETE	B [.65]	-- [.012]	8	16.6 [.655]	2	71	0.10 [.004]	06802	1-192048-9	
10	B [.65]	-- [.012]	8	16.6 [.655]	UNPL	71	0.10 [.004]	06050	1-192048-8	
OBSOLETE	NOT AVAILABLE									
OBSOLETE	B [.59]	-- [.012]	8	15.2 [.600]	UNPL	65	0.10 [.004]	06049	1-192048-7	
10	B [.28]	-- [.012]	8	7.3 [.288]	UNPL	30	0.10 [.004]	06036	1-192048-6	
10	B [.16]	-- [.012]	8	4.4 [.175]	3-2	17	0.10 [.004]	06030	1-192048-5	
10	B [.16]	-- [.012]	8	4.4 [.175]	UNPL	17	0.10 [.004]	06028	1-192048-4	
10	B [.13]	-- [.016]	8	3.2 [.127]	4-2	11	0.10 [.004]	06038	1-192048-3	
10	B [.13]	-- [.016]	8	3.2 [.127]	UNPL	11	0.10 [.004]	06039	1-192048-2	
10	B --	-- [.016]	8	3.2 [.127]	4-2	11	0.08 [.003]	06031	1-192048-1	
10	B [.13]	-- [.016]	8	3.2 [.127]	UNPL	11	0.08 [.003]	06034	1-192048-0	
10	B [.06]	-- [.012]	8	1.7 [.067]	4-2	5	0.10 [.004]	06072	192048-9	
10	B [.05]	-- [.016]	8	1.3 [.051]	4-2	4	0.10 [.004]	06071	192048-8	
10	B [.05]	-- [.016]	8	1.3 [.051]	UNPL	4	0.10 [.004]	06060	192048-7	
10	NOT AVAILABLE									
10	C --	NOTE 7 [.014]	8	--	4-2	--	0.10 [.004]	06058	192048-6	
10	C --	NOTE 6 [.014]	8	--	3-2	--	0.10 [.004]	06059	192048-5	
10	C --	NOTE 7 [.014]	8	--	UNPL	--	0.10 [.004]	06051	192048-4	

- 1 FINISH-SILVER PLATE 200μIN THICK MIN.
- 2 FINISH-NICKEL PLATE 40μIN THICK MIN.
- 3 FINISH-GOLD PLATE 10μIN THICK MIN.
- 4 FINISH-GOLD PLATE 20μIN THICK MIN.
- 5 PLATING NOTES ARE TO BE INTERPRETED AS FOLLOWS, 3-2 AS 3 OVER 2.
- 6 PRODUCT IS SOLD BY THE FOOT.
- 7 72 INCH STRIP WOUND TO A ONE INCH INSIDE DIAMETER.
- 8 MATERIAL-BeCu (CDA172).
- 9 PRELIMINARY PART NUMBER
- 10 OBSOLETE PARTS: OBSOLETE CIS STREAMLINING PER D.RENAUD/D.SINISI

THIS DRAWING IS A CONTROLLED DOCUMENT. 06-12-92

DWN RA JAYNE
 CHK --
 APVD --
 PRODUCT SPEC --
 APPLICATION SPEC --

STE TE Connectivity

CONTACT BAND, MALE

SIZE A2 CAGE CODE 00779 DRAWING NO C=192048 RESTRICTED TO --

MATERIAL SEE TABLE FINISH SEE TABLE WEIGHT -- SCALE NTS SHEET 1 OF 1 REV H

CUSTOMER DRAWING